

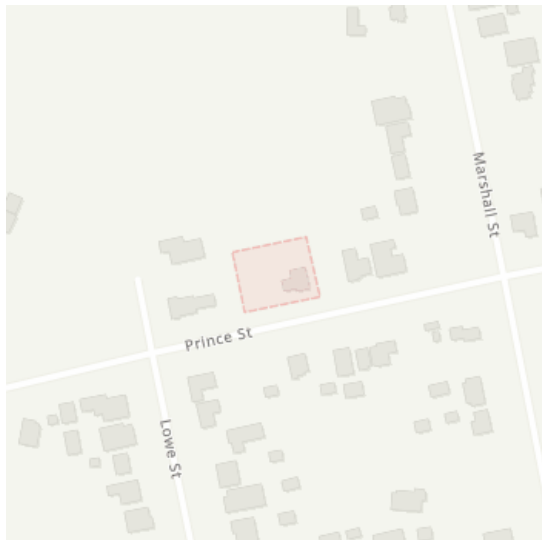
Caller Details

Contact: Max Bowen
Company: Not supplied
Address: PO BOX 107
Clarence Town NSW 2321

Caller Id: 3267818
Phone: 0407 221 840
Email: max@perceptionplanning.com.au

Dig Site and Enquiry Details

WARNING: The map below only displays the location of the proposed dig site and does not display any asset owners' pipe or cables. The area highlighted has been used only to identify the participating asset owners, who will send information to you directly.



User Reference: 69 Prince St
Working on Behalf of: Other 69 Prince Street, Clarence Town
Enquiry Date: 25/07/2023
Start Date: 25/07/2023
End Date: 25/07/2023

Address:
69 Prince St
Clarence Town NSW 2321

Job Purpose:
Design

Onsite Activities:
Planning & Design

Location of Workplace:
Private

Location in Road:

- Check that the location of the dig site is correct. If not you must submit a new enquiry.
- Should the scope of works change, or plan validity dates expire, you must submit a new enquiry.
- Do NOT dig without plans. Safe excavation is your responsibility. If you do not understand the plans or how to proceed safely, please contact the relevant asset owners.

Notes/Description of Works:
Not supplied

Your Responsibilities and Duty of Care

- The lodgement of an enquiry does not authorise the project to commence. You must obtain all necessary information from any and all likely impacted asset owners prior to excavation.
- If plans are not received within 2 working days, contact the asset owners directly & quote their Sequence No.
- ALWAYS perform an onsite inspection for the presence of assets. Should you require an onsite location, contact the asset owners directly. Please remember, plans do not detail the exact location of assets.
- Pothole to establish the exact location of all underground assets using a hand shovel, before using heavy machinery.
- Ensure you adhere to any State legislative requirements regarding Duty of Care and safe digging requirements.
- If you damage an underground asset you MUST advise the asset owner immediately.
- By using this service, you agree to Privacy Policy and the terms and disclaimers set out at www.byda.com.au
- For more information on safe excavation practices, visit www.byda.com.au

Asset Owner Details

The assets owners listed below have been requested to contact you with information about their asset locations within 2 working days. Additional time should be allowed for information issued by post. It is **your responsibility** to identify the presence of any underground assets in and around your proposed dig site. Please be aware, that not all asset owners are registered with the Before You Dig service, so it is **your responsibility** to identify and contact any asset owners not listed here directly.

** Asset owners highlighted by asterisks ** require that you visit their offices to collect plans.

Asset owners highlighted with a hash # require that you call them to discuss your enquiry or to obtain plans.

Seq. No.	Authority Name	Phone	Status
227503539	Essential Energy	13 23 91	NOTIFIED
227503540	Hunter Water Corporation	1300 657 657	NOTIFIED
227503538	NBN Co NswAct	1800 687 626	NOTIFIED
227503541	Telstra NSW Central	1800 653 935	NOTIFIED

END OF UTILITIES LIST



Before You Dig Australia (BYDA)

Location Information

Hunter Water Corporation

36 Honeysuckle Drive
NEWCASTLE NSW 2300

To:

Max Bowen
PO BOX 107
Clarence Town NSW 2321

Enquiry Details	
Utility ID	80220
Job Number	34691011
Sequence Number	227503540
Enquiry Date	25/07/2023 12:26
Response	AFFECTED
Address	69 Prince St Clarence Town
Location in Road	
Activity	Planning and Design

Enquirer Details	
Customer ID	3267818
Contact	Max Bowen
Company	
Email	max@perceptionplanning.com.au
Phone	+61407221840

Enquirer Responsibilities

HWC's provision, and your access to and use, of the data, maps and other information contained in HWC's response to your Before You Dig Australia (BYDA) enquiry (Information) are subject to the following terms and conditions and any additional disclaimers contained in HWC's response.

1. Nature of HWC's assets

You acknowledge and accept that:

- (a) water in HWC mains is under pressure and may cause injury or damage if a main is damaged;
- (b) HWC sewer mains can be under pressure and may cause injury or damage if a main is damaged;
- (c) HWC recycled water mains can be under pressure and may cause injury or damage if a main is damaged;
- (d) HWC services are laid at varying depths;
- (e) the Information does not include data related to property services;
- (f) HWC will seek recovery of repair costs if an HWC asset is damaged; and
- (g) all electrical services are to be considered live.

Accordingly, all persons must exercise extreme care and only use hand excavation until the exact location of all assets within a work area is established.

2. Your use of Information

You acknowledge and accept that:

- (a) neither HWC nor BYDA make any representation or give any guarantee, warranty or undertaking (express or implied) as to the currency, accuracy, completeness, effectiveness or reliability of the Information;
- (b) all Information is:
 - i. generated by an automated system based on the information you submit to the BYDA website and it is your responsibility to ensure that the dig site is properly defined in your enquiry;
 - ii. approximate, intended to be of general application and may not be suitable for your specific requirements;
 - iii. unsuitable for scaling purposes; and
 - iv. based on information available to HWC and may not show all existing structures. For example, the location of Private Sewer/Water Mains is the initial indicative location supplied to HWC. This may not be the current location of such mains and not all private mains have been supplied to HWC;
- (c) you must not solely rely on the Information when undertaking underground works;
- (d) all Information is provided for the sole purpose of assisting you to locate HWC assets before excavation (Permitted Purpose) and you must not copy, translate, modify, distribute or make derivative works of the Information except as directly required to achieve the Permitted Purpose;
- (e) all Information must be used and kept together;
- (f) your access to and use of the Information does not grant you any ownership of or intellectual property rights in the Information;
- (g) in identifying in the Information the presence or potential presence of hazardous or potentially hazardous materials in HWC assets, HWC is not representing or warranting that other HWC assets not identified in the Information as containing or potentially containing hazardous materials do not also contain such materials; and
- (h) in excavating and conducting underground works, you must do so having regard to the fact that asbestos cement pipelines may form part of HWC's water and sewer reticulation systems.

3. Your other obligations

You are responsible for, amongst other things:

- (a) exposing underground structures, including HWC assets, by pot-holing using hand-held tools or vacuum techniques to determine the precise location and extent of structures before any mechanical means of excavation are used;
- (b) protecting underground structures, including HWC assets, from damage and interference;
- (c) maintaining acceptable clearances between HWC assets and structures belonging to others;
- (d) ensuring that backfilling in the vicinity of HWC assets complies with HWC's requirements (as set out on HWC's website or otherwise communicated to you by HWC);
- (e) notifying HWC immediately of any damage caused or threat of damage to any HWC asset; and
- (f) ensuring that plans are approved by HWC (usually by stamping) prior to landscaping or building over or in the vicinity of any HWC asset.

Enquirer Responsibilities Continued

4. Disclaimer

While HWC takes reasonable care in providing details of its underground assets, due to changes in road and footway alignments and levels, the age and incompleteness of some records and the general nature of the Information, it is not possible to conclusively specify the location of all HWC underground assets, including pipes that contain or may contain hazardous materials.

ALL INFORMATION IS PROVIDED AS GENERAL GUIDANCE ONLY AND SHOULD NOT BE USED OR RELIED UPON IN SUBSTITUTION FOR SPECIALISED PROFESSIONAL INDEPENDENT ADVICE. YOU ACKNOWLEDGE AND AGREE THAT YOUR USE OF THE INFORMATION IS AT YOUR OWN RISK.

If you have any questions or concerns about the appropriateness, reliability or application of any Information you must seek advice from a relevantly qualified professional. Further, dealing with hazardous materials is potentially dangerous, and you must always seek advice where the Information provides that HWC's assets contain or may contain hazardous materials.

HWC makes no representation and gives no warranty or undertaking (express or implied) as to the currency, accuracy, completeness, effectiveness or reliability of the Information or that the Information can be used for any purpose in substitution for specialised, professional and independent advice.

5. Limitation of liability

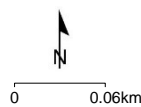
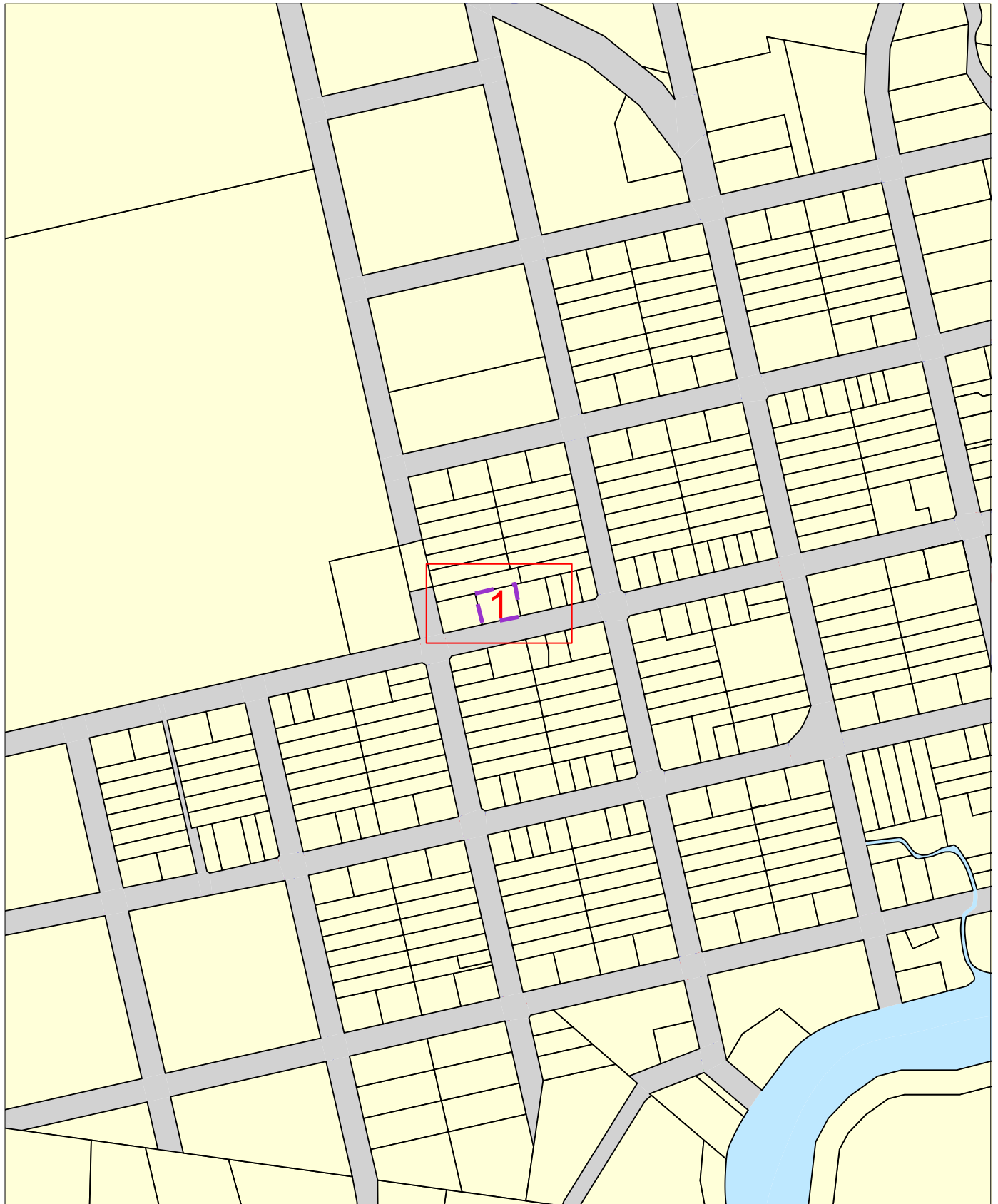
To the fullest extent permitted by law:

- (a) all conditions and guarantees concerning the Information (whether as to quality, outcome, fitness, care, skill or otherwise) expressed or implied by statute, common law, equity, trade, custom, usage or otherwise are expressly excluded and to the extent such conditions and guarantees cannot be excluded, HWC's liability is limited to either of the following (as nominated by HWC):
 - i. HWC supplying the Information to you again; or
 - ii. HWC paying you the cost of having the Information supplied to you again.
- (b) HWC is not responsible for and you release HWC from any actions, liabilities, losses, damages, costs, claims, expenses, injuries or other claims whatsoever (including loss of revenue, use, production, goodwill, profit, business, contract, anticipated savings, financing costs, increased operating costs or other purely financial, economic, special or indirect loss or damage) arising out of:
 - i. your access to or use of the Information;
 - ii. any delay in HWC providing you with Information;
 - iii. your reliance on the Information or its inability to meet your needs;
 - iv. your failure to correctly or accurately:
 - (1) submit relevant or valid data to BYDA; or
 - (2) use or interpret Information provided to you by HWC; or
 - v. any failure, interruption or corruption of any Information;
- (c) you must indemnify HWC and its employees, agents and officers from and against all actions, liabilities, losses, damages, costs, claims, expenses, injuries and other claims arising out of or in connection with HWC providing you with incorrect or incomplete Information; and you assume all risk associated with your use of BYDA and HWC's websites and you release BYDA and HWC from and against all actions, liabilities, losses, damages, costs, claims, expenses, injuries or other claims which may arise in respect of such usage.



Overview Map

Sequence No: 227503540
69 Prince St Clarence Town



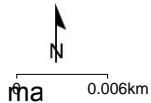
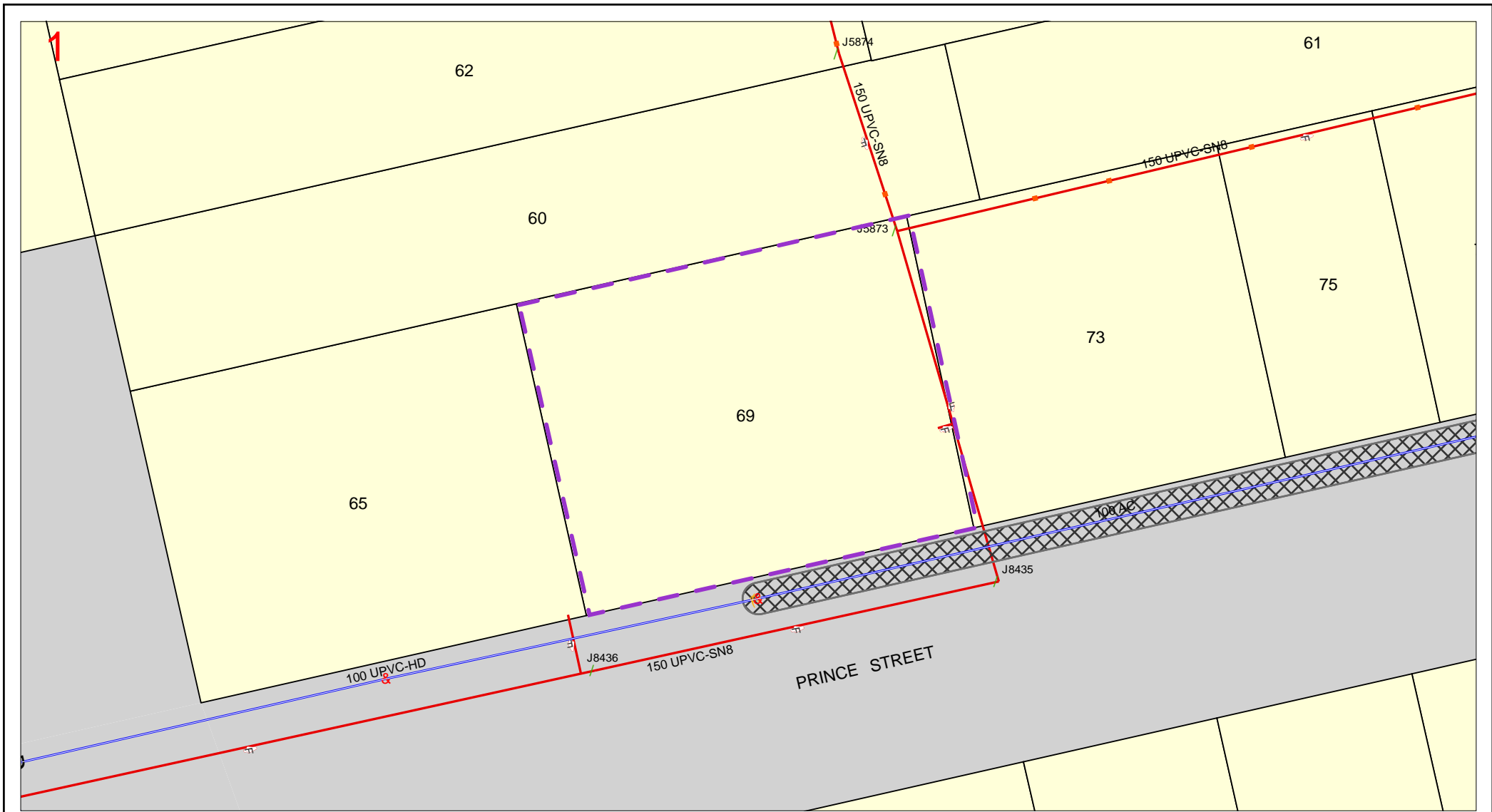
LEGEND:





Map 1

Sequence No: 227503540



IMPORTANT

THIS PLAN IS NOT TO BE USED FOR CONVEYANCING

THIS INFORMATION IS VALID FOR 30 DAYS FROM THE DATE OF ISSUE

SEWER/WATER/RECYCLED WATER/
ELECTRICAL - UTILITY DATA
© HUNTER WATER CORPORATION 2019

SERVICE LOCATIONS ARE APPROXIMATE.
HAND DIG UNTIL ACTUAL LOCATIONS ARE IDENTIFIED.
PROPERTY SERVICES ARE NOT SHOWN.


ANY INFORMATION ON THIS PLAN MAY NOT BE UP TO DATE
AND THE CORPORATION ACCEPTS NO RESPONSIBILITY FOR
ITS ACCURACY.

CADASTRAL DATA © Department Finance, Services & Innovation
[Nov 2017]

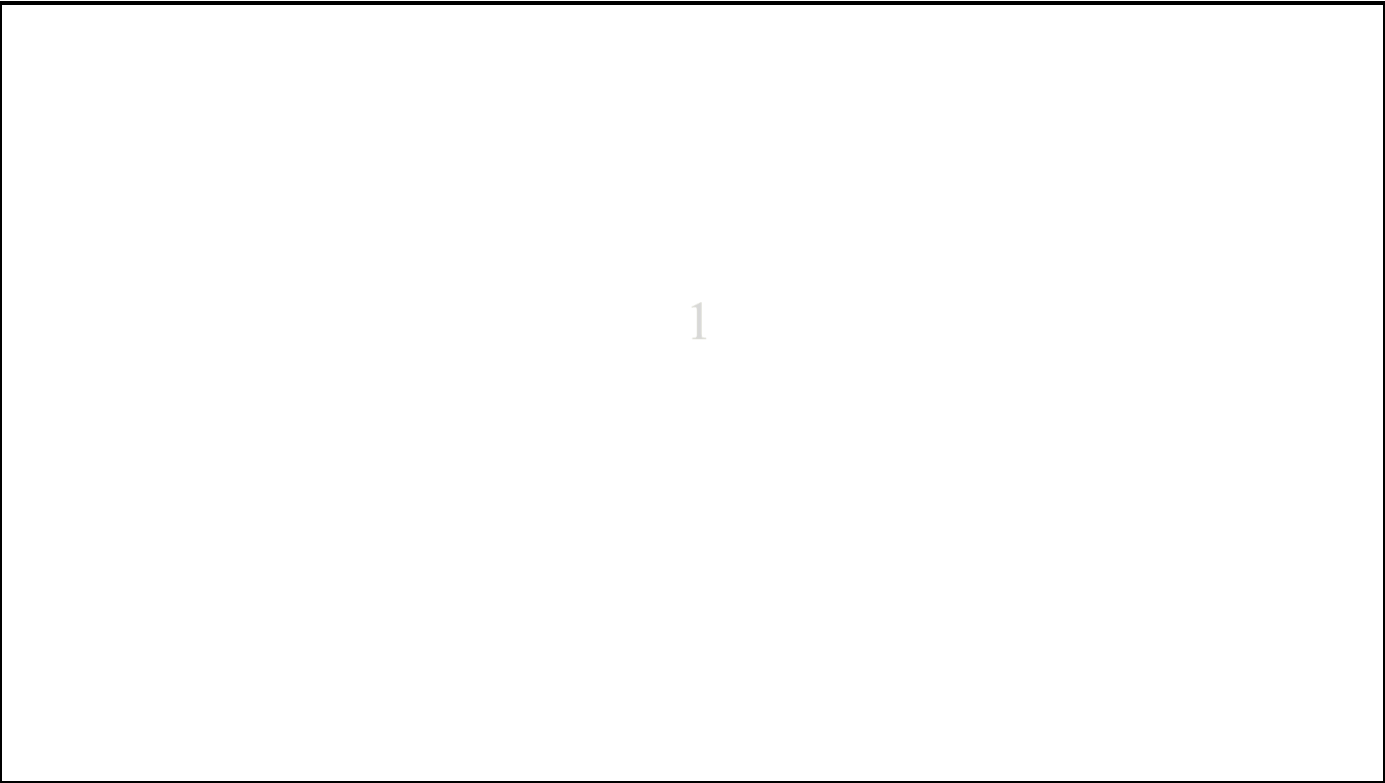
Hunter Water Corporation DBYD Asset Legend

Electrical Assets	Water Assets		RecycledWater Assets	Sewer Assets	StormWater Assets	Land Details
High Voltage	Contol Valve	HWC Rain Gauge	Air Valve	Air Valve	StormWater Assets	Area of Interest
Low Voltage	Hydrant Control Valve	HWC Stream Flow Gauge	Reflux Valve Open	Stop/Butterfly/Ball Valve	StormWater Network Structure	Easement Non HWC
Electrical Pole	Reflux Valve	Radio Base	Stop Valve Open	Gate Valve	StormWater Mains	Fence Line
Distribution Transformer	Stop/Scour Valve	Weather Station	RecycledWater Hydrant	Manhole	Mains Abandon	Non-HWC Easement
Air Break Switch	Tee & Stop Valve	Piezometer	Cluster Box	Cap		HWC Easement
Circuit Breaker	Hydrant	Bore Site	End Cap	Dead End		Parcel
High Voltage	Cluster Box		Flushing Tap	Flushing Tank		Road
Low Voltage	End Cap		Manhole	H&V Bend		Water Parcels
	Flushing Tap		Scour	Junction Connection		Hazardous Material
	Manhole		RecycledWater Meter	Outfall		Map Sheet Index
	Scour		RecycledWater Network Structure	Overflow		
	Water Meter		Other Main	Sewer/Valve Pit		
	Water Network Structure		Reticulation Main	Tangent Point		
	Other Main		Reticulation Main Encased/Conduit	Sewer Meter		
	Trunk Main		Trunk Main	Sewer Vent		
	Reticulation Main		Trunk Main Encased/Conduit	Sewer Network Structure		
	Water Encased Mains		RecycledWater Encased Mains	Other Main		
	Water Prelaid Service		RecycledWater Prelaid Service	Gravity Main		
				Pressure/Vacuum Main		
				Effluent Main		
				Outfall		
				Overflow Main		
				Rising Main		
				Sewer Encased Mains		

To: Max Bowen
Phone: Not Supplied
Fax: Not Supplied
Email: max@perceptionplanning.com.au

Dial before you dig Job #:	34691011	 DIAL BEFORE YOU DIG <small>www.1100.com.au</small>
Sequence #	227503538	
Issue Date:	25/07/2023	
Location:	69 Prince St , Clarence Town , NSW , 2321	

Indicative Plans

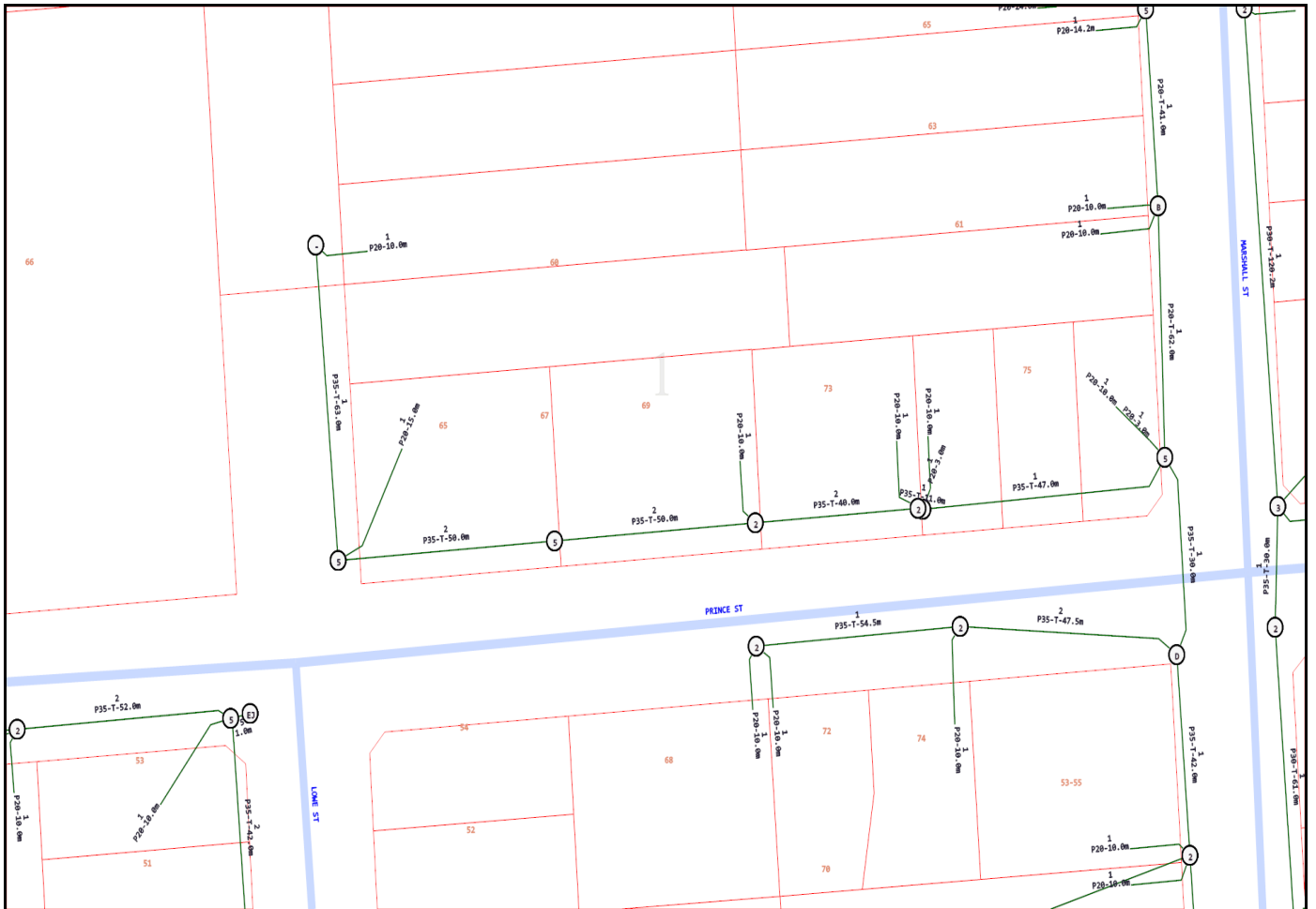




LEGEND



	Parcel and the location
	Pit with size "5"
	Power Pit with size "2E". Valid PIT Size: e.g. 2E, 5E, 6E, 8E, 9E, E, null.
	Manhole
	Pillar
	Cable count of trench is 2. One "Other size" PVC conduit (PO) owned by Telstra (-T-), between pits of sizes, "5" and "9" are 25.0m apart. One 40mm PVC conduit (P40) owned by NBN, between pits of sizes, "5" and "9" are 20.0m apart.
	2 Direct buried cables between pits of sizes, "5" and "9" are 10.0m apart.
	Trench containing any INSERVICE/CONSTRUCTED (Copper/RF/Fibre) cables.
	Trench containing only DESIGNED/PLANNED (Copper/RF/Fibre/Power) cables.
	Trench containing any INSERVICE/CONSTRUCTED (Power) cables.
	Road and the street name "Broadway ST"
Scale	0 20 40 60 Meters 1:2000 1 cm equals 20 m



Emergency Contacts

You must immediately report any damage to the **nbn™** network that you are/become aware of. Notification may be by telephone - 1800 626 329.

To: Max Bowen
Phone: Not Supplied
Fax: Not Supplied
Email: max@perceptionplanning.com.au

Dial before you dig Job #:	34691011	 DIAL BEFORE YOU DIG www.1100.com.au
Sequence #	227503538	
Issue Date:	25/07/2023	
Location:	69 Prince St , Clarence Town , NSW , 2321	

Information

The area of interest requested by you contains one or more assets.

nbn™ Assets	Search Results
Communications	Asset identified
Electricity	No assets

In this notice **nbn™ Facilities** means *underground fibre optic, telecommunications and/or power facilities, including but not limited to cables, owned and controlled by nbn™*

Location of nbn™ Underground Assets

We thank you for your enquiry. In relation to your enquiry at the above address:

- **nbn's** records indicate that there **ARE nbn™** Facilities in the vicinity of the location identified above ("Location").
- **nbn** indicative plan/s are attached with this notice ("Indicative Plans").
- The Indicative Plan/s show general depth and alignment information only and are not an exact, scale or accurate depiction of the location, depth and alignment of **nbn™** Facilities shown on the Plan/s.
- In particular, the fact that the Indicative Plans show that a facility is installed in a straight line, or at uniform depth along its length cannot be relied upon as evidence that the facility is, in fact, installed in a straight line or at uniform depth.
- You should read the Indicative Plans in conjunction with this notice and in particular, the notes below.
- You should note that, at the present time, the Indicative Plans are likely to be more accurate in showing location of fibre optics and telecommunications cables than power cables. There may be a variation between the line depicted on the Indicative Plans and the location of any power cables. As such, consistent with the notes below, particular care must be taken by you to make your own enquiries and investigations to precisely locate any power cables and manage the risk arising from such cables accordingly.
- The information contained in the Indicative Plan/s is valid for 28 days from the date of issue set out above. You are expected to make your own inquiries and perform your own investigations (including engaging appropriately qualified plant locators, e.g DBYD Certified Locators, at your cost to locate **nbn™**

Facilities during any activities you carry out on site).

We thank you for your enquiry and appreciate your continued use of the Dial Before You Dig Service. For any enquiries related to moving assets or Planning and Design activities, please visit the **nbn** [Commercial Works](#) website to complete the online application form. If you are planning to excavate and require further information, please email dbyd@nbnco.com.au or call 1800 626 329.

Notes:

1. You are now aware that there are **nbn**TM Facilities in the vicinity of the above property that could be damaged as a result activities carried out (or proposed to be carried out) by you in the vicinity of the Location.
2. You should have regard to section 474.6 and 474.7 of the *Criminal Code Act 1995* (CoA) which deals with the consequences of interfering or tampering with a telecommunications facility. Only persons authorised by **nbn** can interact with **nbn's** network facilities.
3. Any information provided is valid only for **28 days** from the date of issue set out above.

Referral Conditions

The following are conditions on which **nbn** provides you with the Indicative Plans. By accepting the plans, you are agreeing to these conditions. These conditions are in addition, and not in replacement of, any duties and obligations you have under applicable law.

1. **nbn** does not accept any responsibility for any inaccuracies of its plans including the Indicative Plans. You are expected to make your own inquiries and perform your own investigations (including engaging appropriately qualified plant locators, e.g DBYD Certified Locators, at your cost to locate **nbn**TM Facilities during any activities you carry out on site).
2. You acknowledge that **nbn** has specifically notified you above that the Indicative Plans are likely to be more accurate in showing location of fibre optics and telecommunications cables than power cables. There may be a variation between the line depicted on the Indicative Plans and the location of any power cables.
3. You should not assume that **nbn**TM Facilities follow straight lines or are installed at uniformed depths along their lengths, even if they are indicated on plans provided to you. Careful onsite investigations are essential to locate the exact position of cables.
4. In carrying out any works in the vicinity of **nbn**TM Facilities, you must maintain the following minimum clearances:
 - 300mm when laying assets inline, horizontally or vertically.
 - 500mm when operating vibrating equipment, for example: jackhammers or vibrating plates.
 - 1000mm when operating mechanical excavators.
 - Adherence to clearances as directed by other asset owner's instructions and take into account any uncertainty for power cables.
5. You are aware that there are inherent risks and dangers associated with carrying out work in the vicinity of underground facilities (such as **nbn**TM fibre optic, copper and coaxial cables, and power cable feed to **nbn**TM assets). Damage to underground electric cables may result in:
 - Injury from electric shock or severe burns, with the possibility of death.
 - Interruption of the electricity supply to wide areas of the city.
 - Damage to your excavating plant.
 - Responsibility for the cost of repairs.
6. You must take all reasonable precautions to avoid damaging **nbn**TM Facilities. These precautions may include but not limited to the following:
 - All excavation sites should be examined for underground cables by careful hand excavation. Cable cover slabs if present must not be disturbed. Hand excavation needs to be undertaken with extreme care to minimise the likelihood of damage to the cable, for example: the blades of hand equipment should be aligned parallel to the line of the cable rather than digging across the cable.
 - If any undisclosed underground cables are located, notify **nbn** immediately.

- All personnel must be properly briefed, particularly those associated with the use of earth-moving equipment, trenching, boring and pneumatic equipment.
 - The safety of the public and other workers must be ensured.
 - All excavations must be undertaken in accordance with all relevant legislation and regulations.
7. You will be responsible for all damage to **nbn**TM Facilities that are connected whether directly, or indirectly with work you carry out (or work that is carried out for you or on your behalf) at the Location. This will include, without limitation, all losses expenses incurred by **nbn** as a result of any such damage.
 8. You must immediately report any damage to the **nbn**TM network that you are/become aware of. Notification may be by telephone - 1800 626 329.
 9. Except to the extent that liability may not be capable of lawful exclusion, **nbn** and its servants and agents and the related bodies corporate of **nbn** and their servants and agents shall be under no liability whatsoever to any person for any loss or damage (including indirect or consequential loss or damage) however caused (including, without limitation, breach of contract negligence and/or breach of statute) which may be suffered or incurred from or in connection with this information sheet or any plans(including Indicative Plans) attached hereto. Except as expressly provided to the contrary in this information sheet or the attached plans(including Indicative Plans), all terms, conditions, warranties, undertakings or representations (whether expressed or implied) are excluded to the fullest extent permitted by law.

All works undertaken shall be in accordance with all relevant legislations, acts and regulations applicable to the particular state or territory of the Location. The following table lists all relevant documents that shall be considered and adhered to.

State/Territory	Documents
National	Work Health and Safety Act 2011
	Work Health and Safety Regulations 2011
	Safe Work Australia - Working in the Vicinity of Overhead and Underground Electric Lines (Draft)
	Occupational Health and Safety Act 1991
NSW	Electricity Supply Act 1995
	Work Cover NSW - Work Near Underground Assets Guide
	Work Cover NSW - Excavation Work: Code of Practice
VIC	Electricity Safety Act 1998
	Electricity Safety (Network Asset) Regulations 1999
QLD	Electrical Safety Act 2002
	Code of Practice for Working Near Exposed Live Parts
SA	Electricity Act 1996
TAS	Tasmanian Electricity Supply Industry Act 1995
WA	Electricity Act 1945
	Electricity Regulations 1947
NT	Electricity Reform Act 2005
	Electricity Reform (Safety and Technical) Regulations 2005
ACT	Electricity Act 1971

Thank You,

nbn DBYD

Date: 25/07/2023

This document is provided for information purposes only. This document is subject to the information classification set out on this page. If no information classification has been included, this document must be treated as UNCLASSIFIED, SENSITIVE and must not be disclosed other than with the consent of nbn co. The recipient (including third parties) must make and rely on their own inquiries as to the currency, accuracy and completeness of the information contained herein and must not use this document other than with the consent of nbn co.

Copyright © 2021 nbn co Limited. All rights reserved.



CABLE/PIPE LOCATION

Assets were found in the search area

COMPANY NAME:	Not supplied
ATTENTION:	Max Bowen
SEARCH LOCATION:	69 Prince St Clarence Town NSW 2321
SEQUENCE NO:	227503539
DATE:	Tuesday, 25 July 2023

Provision of Plans:

Please find enclosed plans depicting approximate locations of **Essential Energy** assets in the search location. **The excavator must not assume that there may not be assets owned by other network operators in the search location.**

Underground assets searched for	Underground assets found
Essential Energy Electrical	<input checked="" type="checkbox"/>
Essential Energy Water & Sewerage	<input type="checkbox"/>

Plans are updated from time to time to record changes to underground assets and may be updated by Essential Energy without notice. In the event that excavation does not commence within 28 days of receipt of a plan, a new plan should be obtained.

The excavator must retain the plans on site for the duration of the works.

The excavator shall report all damage made to Essential Energy assets immediately. Note that damage includes gouges, dents, holes and gas escapes.

**IN CASE OF EMERGENCY OR TO REPORT DAMAGE:
PHONE 13 20 80**

DISCLAIMER

Please be aware that plans may **not** reflect alterations to surface levels or the position of roads, buildings, fences etc. **Cable and pipe locations are approximate** and the plans are **not** suitable for scaling purposes. *Essential Energy does not retain plans for privately-owned underground electrical or water & sewerage assets located on private property. Privately-owned underground electrical assets located on private property are the responsibility of the owner.*

The plans have been prepared for Essential Energy's sole use and benefit. **Essential Energy cannot and does not warrant the accuracy or completeness of the plans.** Essential Energy supplies them at no cost with the object of reducing the serious risk of unintentional damage being caused to its cables and pipes. **Essential Energy does not accept any responsibility for any omissions, inaccuracies or errors in the plans, or any reliance place on the material. Any reliance placed on any plan provided in response to your request is at your own risk.**



Essential Energy retains all intellectual and industrial property rights which exists or may exist in or with respect to the plan(s). The material provided is not to be copied or distributed beyond you.

You release Essential Energy from and against all claims, demands, actions and proceedings arising out of or in any way related to the use of the provided material.

Location of Assets on Site:

The plans indicate only that cables and pipes may exist in the general vicinity – they do not pinpoint the exact location of the cables and pipes.

If it is found that the location of cables or pipes on the plans can be improved, please notify Essential Energy on 13 23 91 (or fax 1800 354 636).

All individuals have a duty of care they must observe when working in the vicinity of underground cables and pipes. It is the **excavator's responsibility to visually expose the underground cables and pipes manually, ie. by using hand-held tools and non-destructive pot-holing techniques prior to any mechanical excavation**. The excavator will be held responsible for all damage caused to the Essential Energy network or cables and pipes, and for the costs associated with the repair of any such damage. The excavator will also be held responsible for all damage caused to any persons.

When digging in the vicinity of underground assets, persons should observe the requirements of the applicable Codes of Practice published by the NSW Work Cover Authority or Safe Work Australia, and any amendments from time to time by the Authorities, including although not limited to:

- Excavation Work
- Managing Electrical Risks in the workplace
- How to manage and control asbestos in the workplace

(Please refer to <https://www.workcover.nsw.gov.au/law-and-policy/legislation-and-codes/codes-of-practice>).

When digging in the vicinity of **electrical assets** persons should observe the requirements of the **Electricity Supply Act 1995**.

Persons excavating near live underground electrical reticulation and/or earthing cables **must exercise extreme caution at all times and adhere to the requirements of Essential Energy's Electrical Safety Rules**. (These are available on our website: <http://www.essentialenergy.com.au/content/safety-community> and include

- **Work near Essential Energy's Underground Assets:**
<http://www.essentialenergy.com.au/asset/cms/pdf/contestableWorks/CEOP8041.pdf> , and
- **Asbestos Fact Sheet:**
<http://www.essentialenergy.com.au/asset/cms/pdf/safety/AsbestosFactSheet.pdf>

In some situations these procedures call for work to be performed by authorised staff.

Should there be any doubt as to the exact location of any underground electrical assets, and the potential for conflict with live underground cables caused by excavation at your work site, you should contact

13 23 91 to arrange for an on-site visit by an Essential Energy representative. No construction or mechanical excavation work is to commence prior to this on-site visit and approval being obtained.

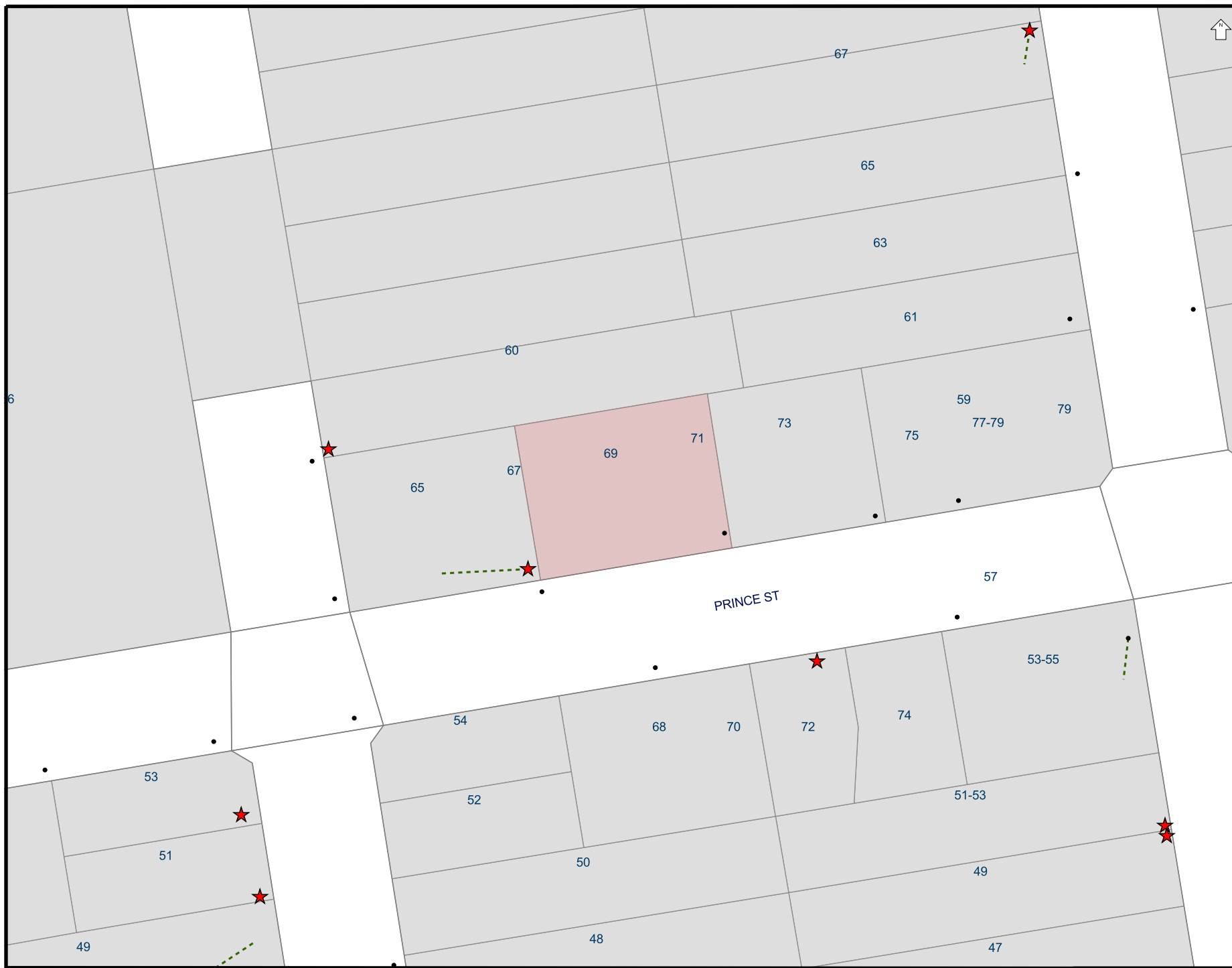
When digging in the vicinity of **water or sewer assets** persons should observe the requirements of the **Water Management Act 2000**.

Should there be any doubt as to the exact location of any underground water and sewer assets, and the potential for conflict with underground water and sewer pipes caused by excavation at your work site, you should contact **13 23 91** to arrange for an on-site visit. No construction or excavation work is to commence prior to this on-site visit and approval being obtained.

Prior Notification:

Please note that for excavation depths greater than 250mm near power poles and stays you should allow for **advance notice** in your construction program to permit Essential Energy time to allocate the necessary field resources to carry out the inspection at the site a **minimum of fourteen (14) working days prior to work commencing**. This service may incur a fee and this can be negotiated with the local Area Coordinator at the time of making the appointment. Failure to give reasonable notice to the local Area Coordinator may result in disruption to Essential Energy's planned works program in the district and could incur an extra charge over and above the normal rate for this service.

For further information please call 13 23 91.



Overhead wires not shown
LOOK UP & LIVE!

LEGEND

- LV Underground Cable
- HV Underground Cable
- Underground Pipe
- ★ Underground Earth or Wires
- ▲ Ground Substation
- Pole
- ⊠ Cubicle
- Pit
- Area of Interest

Critical Assets

Contact Essential Energy
on 13 23 91

- Zone Substation
- Underground Cable
- Underground Fibre

Proposed Works

- Area of proposed works

Proposed assets are shown as
orange symbols

THE INFORMATION ON THIS
MAP MAY NOT BE
ACCURATE.

If details are
incorrect, please
notify

Essential Energy on
13 23 91
(or fax 1800 354 636)

ISSUE DATE: 25/07/2023

You must resubmit your
request if you have not
started work within 4 weeks
of the 'Issue Date' above

A4 SCALE: 1:1307



Job Number: 34691011

Sequence number: 227503539

Job location: 69 Prince St, Clarence Town

Map
Centre: 151° 46' 25.9", -32° 35' 11.9"

When working near underground electrical infrastructure

NSW legislation requires people who are planning to do excavation work to obtain copies of underground electricity cable plans through Dial Before you Dig (Phone 1100) and to make sure that the plans are no more than 30 days old when excavation commences.

The aim of the legislation is to ensure that when workers dig or drive items near underground electricity cables, ducting, and pipes, they will establish the exact location of the cables and thus avoid coming into contact with them or damaging them. These items carry vital services such as electricity, water, gas and communications, and establishing their location before digging will help ensure worker safety and prevent damage to the network which may cause disruption of essential services to local communities.

Excavate safely and protect underground assets

Dial Before You Dig (DBYD) is the first step to excavating safely. You should use DBYD when you will be undertaking (but not restricted to) the following:

- > Any excavation using machinery digging deeper than 150mm. This includes but is not restricted to back hoes, excavators, borers & kanger hammers (ploughing or ripping activities)
- > Any excavation using hand tools deeper than 300mm which includes shovels, spades and crow bars
- > Any vertical or horizontal boring.

Note: The above examples are general and may not cover all situations in the regulations where a DBYD would be required e.g. driving metal posts in the ground.

Regardless of the size of your project you should lodge an enquiry with DBYD before commencing work. This applies to small tasks like backyard landscaping, driving items into the ground as well as heavy work such as directional boring or directional drilling. DBYD strive to respond to enquiries within two business days.

Dial Before You Dig

- > Phone 1100
- > Web www.1100.com.au
- > Download the DBYD iPhone app



The Essential First Step

When a DBYD has been obtained, contact Essential Energy on **13 23 91** to identify any underground pipes and/or cables in the vicinity of excavation works to be carried out. Allow at least **two weeks or 10 working days advance notice** in your construction program to permit Essential Energy time to allocate the necessary field resources to carry out an onsite inspection if required. This service may incur a fee & should be stated at the time of making the appointment.

In the event the excavation does not commence within 28 days of receipt of a plan, a new plan should be obtained. The excavator **must** retain the plans on site for the duration of the excavation works.

Your responsibility

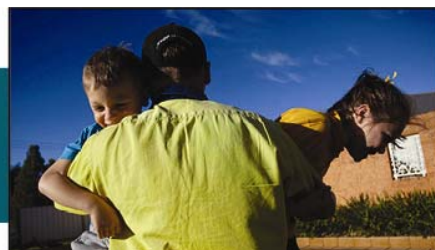
All individuals have a duty of care they must observe when working in the vicinity of underground cables, ducts and pipes. Be aware of the requirement set out in the latest WorkCover Codes of Practice 'Work near Underground Assets Guideline' and 'Work near Overhead Powerlines' which can be viewed at www.workcover.nsw.gov.au or you can purchase a copy of the Code of Practice by contacting WorkCover on 1300 799 003.

You should also be familiar with Essential Energy's operational procedures 'Work near Essential Energy's underground assets' CEOP8041 and 'Construction work near electricity network' CEOP1116, which can be found at essentialenergy.com.au/construction

- > **Employers:** If you're an employer or employing someone to excavate, complete construction or drive items into the ground even at home you have a legal obligation to ensure their safety
- > **Excavators:** It is the excavator's responsibility to visually expose the underground pipes and cables manually before any construction begins.

Note – when excavating involving high pressure water or compressed air to break up the ground, which is then removed by a powerful vacuum unit to expose critical utilities after they have been electronically located to confirm identity, size, number of services and depth, checks should be carried out to ensure the pressure is acceptable for all cables and other assets which may be found prior to commencing pot holing by this method. Warning: CONSAC cables shouldn't be potholed by this method and must be de-energised before any work carried out near them. It's recommended to only use air/vacuum equipment to pot hole that operates at or less than 13,790Kpa (2000psi).

Be safe, because they need you



No Go Zone for powered excavation

Extract from WorkCover “Work near Underground Assets”

TABLE 1: Types of assets and limits of underground approach

Assets	Clearances	No Go Zone for Powered Excavation	Controls	Typical Depths
Low voltage electricity cables – voltages less than or equal to 1000V (1kV)	Close proximity with the use of hand tools	300 mm	Must contact asset owner for specific conditions	450 – 750 mm
Electricity conductors from 11,000V (11kV) up to 33,000V (33 kV)	Close proximity with the use of hand tools	600 mm	Must contact asset owner for specific conditions	900 mm
Underground sub-transmission cables 33,000V up to 132,000V (132 kV)	Must contact asset owner	Must contact asset owner	Must be carried out under the supervision of the asset owner	900 mm
High Voltage Electricity cables – voltages from 1000V (1kV) up to (33 kV)	Close proximity with the use of hand tools	Must contact asset owner	Must contact asset owner for specific conditions	600 – 1000 mm
Extra High Voltage Electricity Transmission cables – voltages above (132 kV) and 330,000V (330 kV)	Must contact asset owner	Must contact asset owner	Work must be carried out under the supervision of the asset owner	800 – 1200 mm

How to expose cables or pipes

Location plans provide an indication of the presence of underground assets only; they do not pinpoint the exact location. This is why manual exposure is required, which can be done by potholing. Underground assets must first be exposed by pot-holing with non-conductive tools to identify their location. Excavation with hand tools shall be carried out carefully up to, but not closer than, the minimum distances specified in Table 1. Several potholes may need to be dug manually to determine and satisfy yourself of the exact locations of cables or pipes to avoid any mishaps. Manual pot-holing needs to be undertaken with extreme care, common sense and while employing techniques least likely to damage cables. For example, orientate shovel blades and trowels parallel to the cable rather than digging across the cable. Look out for sand, plastic strips or specially marked bricks when excavating, which signal the presence of underground cables.

Only once all underground assets have been located, marked and protected against damage can the excavation proceed with caution.

No Go Zone for powered excavation

Directional boring is powered excavation and contact with the asset owner must be made before excavation takes place. For directional boring across the line of an asset a minimum clearance of **300 mm** from the asset shall be maintained. When boring across the line of an underground asset, the location of the asset/s shall be positively proven by hand digging (pot-holing) or by another approved method and a safety observer appointed.

Note: Where the risk assessment identifies a potential risk of making contact with either underground assets, safety observer/s would be required. The safety observer's

responsibility is to ensure that approach distances from underground and overhead assets are maintained.

For boring under electricity cables, the only true way of knowing where the directional drill is, is to “see” it. It is necessary to excavate a slit trench at right angles to the approaching drill and 500mm deeper than the asset being protected and beside the cables to confirm the depth of the cables and ensure the drill is not within the minimum approach distance of the cable (specified in Table 1).

For directional boring parallel to the asset and at the level of the asset, a clearance of **500 mm** shall be maintained from the edge of the nearest asset and pot holed at 10m intervals to ensure clearances are maintained with a safety observer appointed.

The four Ps of safe excavation

- Plan** – Plan your job. Use the Dial Before You Dig service before your job is due to begin to help keep your project safe. Contact Essential Energy on 13 23 91 to identify any underground pipes and/or cables in the vicinity
- Pothole** – Potholing (digging by hand) is a method to assist in establishing the exact location of all underground infrastructure. Only use air/vacuum equipment to pot hole that operates at or less than 13,790Kpa (2000psi)
- Protect - Protecting and supporting exposed infrastructure is the excavator's responsibility.** Always erect safety barriers in areas at risk to protect underground networks
- Proceed** – But ONLY when you have planned, potholed and put the protective measures in place.

Be safe, because they need you



Digging safely

You cannot be too careful when it comes to safe excavation. Avoiding underground ducting pipe and cable damage is as simple as having the right tools, the right skills and the right information.

- > Study the plans you receive from asset owners thoroughly
- > Check to see if they relate to the area you requested and make sure you understand them. If you are unclear about what the symbols mean or how to proceed, contact the relevant network owner
- > Check the work area for other forms of electrical equipment, including street lights, ground substations, phone boxes or traffic lights – all good indicators that underground cables will be present
- > Remember underground cables can also be present even if overhead powerlines have been identified
- > Never assume the depth or alignment of pipes and cables. Installed networks assets may not have been installed in a straight line
- > Always observe any instructions stated on the plans provided by the asset owner
- > Remember, plans and maps identifying the location of underground cables and depths can alter after road upgrades or developments and underground assets may be as little as a few millimetres below the surface
- > Other service lines (for example gas mains (pipes) and communication cables) can also be present. Shared trenches are frequently used on underground runs to premises
- > New electrical cables are sometimes laid using existing old conduits
- > Various methods of protecting underground cables may be utilised (for example electrical bricks, conduits, concrete or flat PVC barriers) or may be direct buried or installed by under-boring methods which may have no visual disturbance of the ground
- > Ensure overhead & electrical structures aren't undermined during excavation.

Earth cables

Earth cables are an important part of all electrical installations and have two main purposes:

- > To safeguard against the possibility of danger to life
- > To maintain the good working order of the electrical network.

They can have potentially dangerous electrical current flowing through them. Usually they have a green and yellow covering but could be a bare cable buried directly in the ground.

Even if the map provided does not show underground cables, earth cables may be present. These earth cables are usually associated with electrical equipment located

on the pole such as transformers, switching equipment, permanent earthing points or Padmount / kiosk subs.

It's recommended that if any excavation is to take place within **10m** of a power pole with a cable running down it into the ground, contact is made with Essential Energy on **13 23 91** to have the earthing system located. While an effort is made to install the earthing under the powerline and guy if installed, sometimes circumstances may require a variation to this, so don't assume where they are installed. The distance and configuration that the earthing cable is installed varies due to the soil conditions and system type (e.g. Single wire earth return (SWER)).

Additional earthing electrodes stakes may be installed to ensure the required earthing reading is obtained.

WARNING:SWER installations

- > Contacting SWER earthing can be deadly
- > Voltage is present on SWER transformer earthing systems either at 12.7 kV or 19.1kV
- > NO excavation is allowed within 10 metres of a SWER transformer pole.

Excavating around electrical poles

Anyone intending to excavate around any electrical item risks serious injury or death as a result of contact with underground cables or the earthing system.

Assets around poles

For excavation depths greater than 250mm near power poles and stays you must arrange for an Essential Energy representative to attend the worksite 2 weeks prior to work commencing. Call Essential Energy on **13 23 91**. More information is available in Essential Energy's operational procedure, 'Work near Essential Energy's underground assets: CEOP8041' which can be found at essentialenergy.com.au/construction

Unless otherwise agreed, underground assets and other obstructions around poles are to be kept a minimum distance of 300mm from the periphery of the pole, to allow inspections by the asset owner employees.

No excavation within 10 metres of a SWER transformer pole is to occur without the approval of the local electricity asset owner. It should be noted that the NSW Service and Installation Rules require a sketch of the underground service/consumers mains to be marked inside the switchboard.

The risks are higher for those earthing systems of the SWER constructions as the earthing is utilised as the return path.

Be safe, because they need you



Typically any electrical item installed on a pole will have an earth wire running down the pole into the ground, which includes:

- > Transformers in urban and rural situations
- > Isolation, protection and regulation items.

Transformers located on the ground (padmount and kiosk), besides having underground electrical cables, will have an earthing system installed around them.

Damaged earthing

If an earth cable has been damaged, maintain a clearance of eight (8) meters and contact Essential Energy on **13 23 91**. **DONT ATTEMPT** to re-join the cable - this will place you at serious risk.

Operating near underground cables and earths

- > Underground cables should never be moved or relocated unless under the express authority of the organisation or person responsible for the powerlines
- > The excavator shall report all damage made to Essential Energy assets immediately. Damage includes: gouges, dents, holes and gas escapes
- > Never undermine poles, cables, earthing cable, pad-mount and kiosk substations.



Above: Poles with become unstable if undermined

Make sure it can't go wrong

You should ensure that people at work, their equipment (tools and plant) or materials do not come within close proximity to underground powerlines unless:

- > A written risk assessment has been completed and a safe system of work implemented
- > The relevant safety precautions and worker training requirements, including WorkCover Codes of Practice and Essential Energy's requirements, have been implemented and complied with.

If working in close proximity to underground cables is unavoidable and the risk assessment has been completed, the following should be considered to control the risks and ensure work safety:

- > Have the power switched off by Essential Energy
- > Consider all conductors as live unless it is positively known they have been de-energised
- > Where appropriate, provide ground markings to identify location and warn workers of the presence of underground power and other assets.

Emergency situations

In the event that contact with an underground powerline occurs or cables are exposed or damaged, remembering the following points could help save a life:

- > If the situation is at all life threatening, immediately contact the Emergency Services on 000 (triple zero)
- > Call Essential Energy's 24-hour supply interruptions line – **13 20 80** to switch off the power if required or report damage or exposure cables / conduits
- > If any other underground assets are damaged you should contact the affected asset owners immediately
- > Treat underground cables as alive, even if they appear to be dead
- > Keep everyone at least eight metres away from the incident site, the person or any machinery making contact with underground cable
- > Don't panic or touch the person receiving the electric shock – this could place you at risk
- > Untrained, unequipped persons should not attempt to rescue a person receiving an electric shock. All too often secondary deaths occur when others go to the aid of earlier victims
- > Remain on/inside the machinery until the supply is disconnected
- > If possible, break contact between the machinery and underground cable.



For more information

Essential Energy's Public Safety team is available to facilitate Electrical Awareness sessions and discuss any questions relating to electrical safety. For more information on electrical safety please call

- > Essential Energy General Enquiries 13 23 91
- > Essential Energy Supply Interruptions 13 20 80
- > WorkCover NSW 13 10 50
- > Dial Before You Dig www.1100.com.au 1100

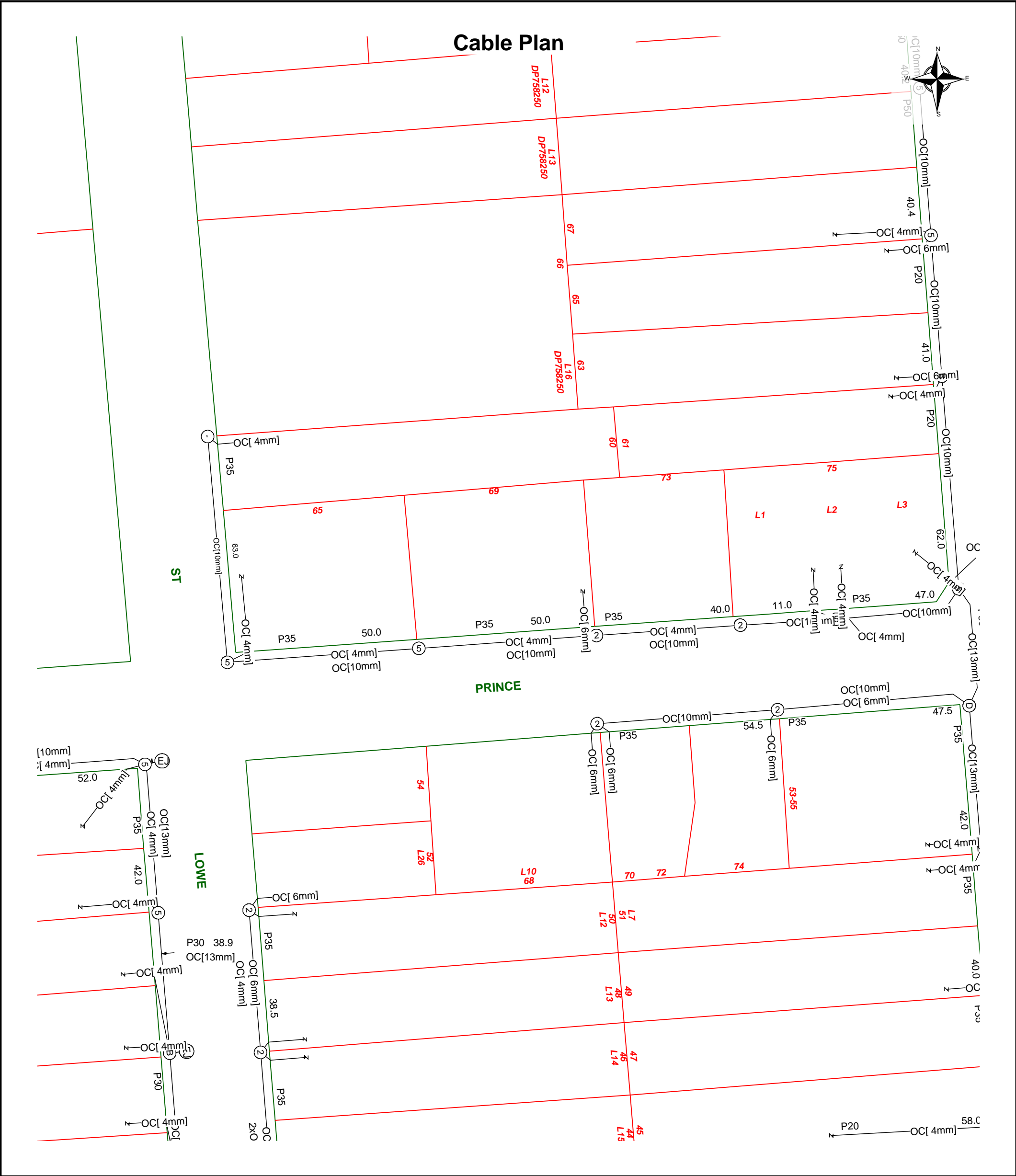
- > Follow us  
- > or visit essentialenergy.com.au/safety


Safety first: Before you dig or drive items into the ground

1. Contact DBYD
2. DO NOT attempt to excavate within 10m of any power pole or electrical item
3. Contact Essential Energy on 13 23 91 for assistance to locate cables and earthing
4. Locate asset: Pot-hole
5. Proceed only if you have satisfied yourself it is safe.

Be safe, because they need you





	Report Damage: https://service.telstra.com.au/customer/general/forms/report-damage-to-telstra-equipment Ph - 13 22 03 Email - Telstra.Plans@team.telstra.com Planned Services - ph 1800 653 935 (AEST bus hrs only) General Enquiries		Sequence Number: 227503541	
	TELSTRA LIMITED A.C.N. 086 174 781		Please read Duty of Care prior to any excavating	
	Generated On 25/07/2023 12:32:21			

WARNING
Telstra plans and location information conform to Quality Level "D" of the Australian Standard AS 5488-Classification of Subsurface Utility Information. As such, Telstra supplied location information is indicative only. Spatial accuracy is not applicable to Quality Level D. Refer to AS 5488 for further details. The exact position of Telstra assets can only be validated by physically exposing it. Telstra does not warrant or hold out that its plans are accurate and accepts no responsibility for any inaccuracy. Further on site investigation is required to validate the exact location of Telstra plant prior to commencing construction work. A Certified Locating Organisation is an essential part of the process to validate the exact location of Telstra assets and to ensure the asset is protected during construction works.

See the Steps- Telstra Duty of Care that was provided in the email response.



OPENING ELECTRONIC MAP ATTACHMENTS -

Telstra Cable Plans are generated automatically in either PDF or DWF file types dependant on the site address and the size of area selected. You may need to download and install free viewing software from the internet e.g.



PDF Map Files (max size A3)

Adobe Acrobat Reader (<http://get.adobe.com/reader/>),



DWF Map Files (all sizes over A3)

Autodesk Viewer (Browser) (<https://viewer.autodesk.com/>) or

Autodesk Design Review (<http://usa.autodesk.com/design-review/>) for DWF files.
(Windows)



Telstra DBYD map related enquiries

email - Telstra.Plans@team.telstra.com

1800 653 935 (AEST Business Hours only)



REPORT ANY DAMAGE TO THE TELSTRA NETWORK IMMEDIATELY

Report online - <https://www.telstra.com.au/forms/report-damage-to-telstra-equipment>

Ph: 13 22 03

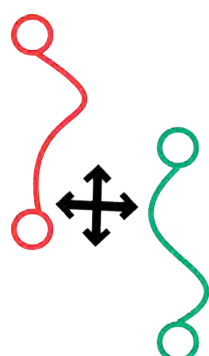
If you receive a message asking for a phone or account number say:

"I don't have one" then say "Report Damage" then press 1 to speak to an operator.



Telstra New Connections / Disconnections

13 22 00



Telstra asset relocation enquiries: 1800 810 443 (AEST business hours only).

NetworkIntegrity@team.telstra.com

<https://www.telstra.com.au/consumer-advice/digging-construction>

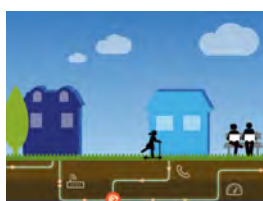
Certified Locating Organisation (CLO)

<https://dbydlocator.com/certified-locating-organisation/>



DBYDCertification

Please refer to attached Accredited Plant Locator.pdf



Telstra Smart Communities

Information for new developments (developers, builders, homeowners)

<https://www.telstra.com.au/smart-community>

LEGEND

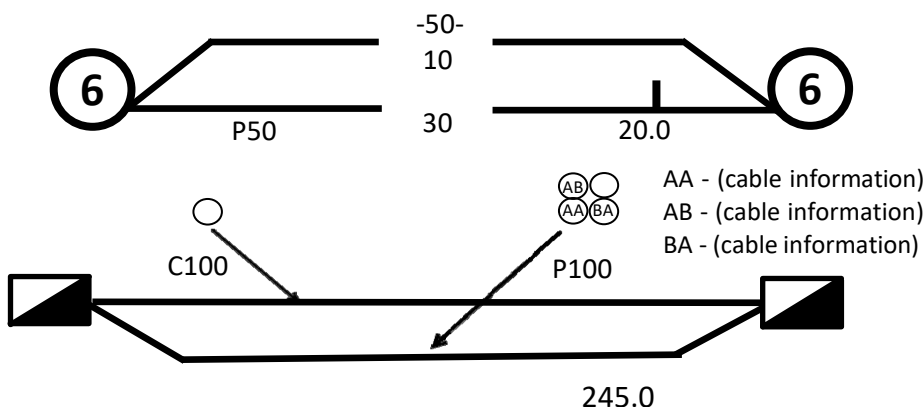
IT'S HOW
WE CONNECT



For more info contact a [Certified Locating Organisation](#) or Telstra Plan Services 1800 653 935

	Exchange (Major Cable Present)		Cable Jointing Pit (number / Letter indicating Pit Type)
	Footway Access Chamber (can vary from 1-lid to 12-lid)		Elevated Joint (above ground joint on buried cable)
	Pillar / Cabinet (above ground / free standing)		Telstra Plant in shared Utility trench
	Above ground complex equipment housing (eg RIM) Please Note: This equipment is powered by 240V Electricity		Aerial Cable / Overhead (includes on wall)
	Other Carrier Telecommunications Cable/Asset		Aerial Cable (attached to joint Use Pole eg. Power)
	Distribution cables in Main Cable ducts		Direct Buried Cable
	Main Cable ducts on a Distribution plan Blocked or damaged duct.		Marker Post Installed
	Roadside / Front Boundary 2 pair lead-in to property from pit in street 1 pair working (pair ID 059) 1 pair dead (i.e. spare, not connected)		Buried Transponder
	Side / Rear Property Boundary Property Number		Marker Post, Transponder
	Single to multiple round conduit Configurations 1.2.4.9 respectively (attached text denotes conduit type and size)		Optical Fibre cable direct buried
	Multiple square conduit Configurations 2, 4, 6 respectively (attached text denotes conduit type and size)	Some examples of conduit type and size: A - Asbestos cement, P - PVC / Plastic, C - Concrete, GI - Galanised iron, E - Earthenware Conduit sizes <i>nominally</i> range from 20mm to 100mm P50 50mm PVC conduit P100 100mm PVC conduit A100 100mm asbestos cement conduit	

Some Examples of how to read Telstra Plans



One 50mm PVC conduit (P50) containing a 50-pair and a 10-pair cable between two 6-pits. approximately 20.0m apart, with a direct buried 30-pair cable along the same route

Two separate conduit runs between two footway access chambers (manholes) approximately 245m apart A nest of four 100mm PVC conduits (P100) containing assorted cables in three ducts (one being empty) and one empty 100mm concrete duct (C100)

WARNING: Telstra plans and location information conform to Quality Level 'D' of the Australian Standard AS 5488 - Classification of Subsurface Utility Information. As such, Telstra supplied location information is indicative only. Spatial accuracy is not applicable to Quality Level D. Refer to AS 5488 for further details. Telstra does not warrant or hold out that its plans are accurate and accepts no responsibility for any inaccuracy shown on the plans. FURTHER ON SITE INVESTIGATION IS REQUIRED TO VALIDATE THE EXACT LOCATION OF TELSTRA PLANT PRIOR TO COMMENCING CONSTRUCTION WORK. A plant location service is an essential part of the process to validate the exact location of Telstra assets and to ensure the assets are protected during construction works. The exact position of Telstra assets can only be validated by physically exposing them. Telstra will seek compensation for damages caused to its property and losses caused to Telstra and its customers.